



MONTHLY MEMBERSHIP PROGRESS REPORT

District 110AN

Results as of: 5/31/2015

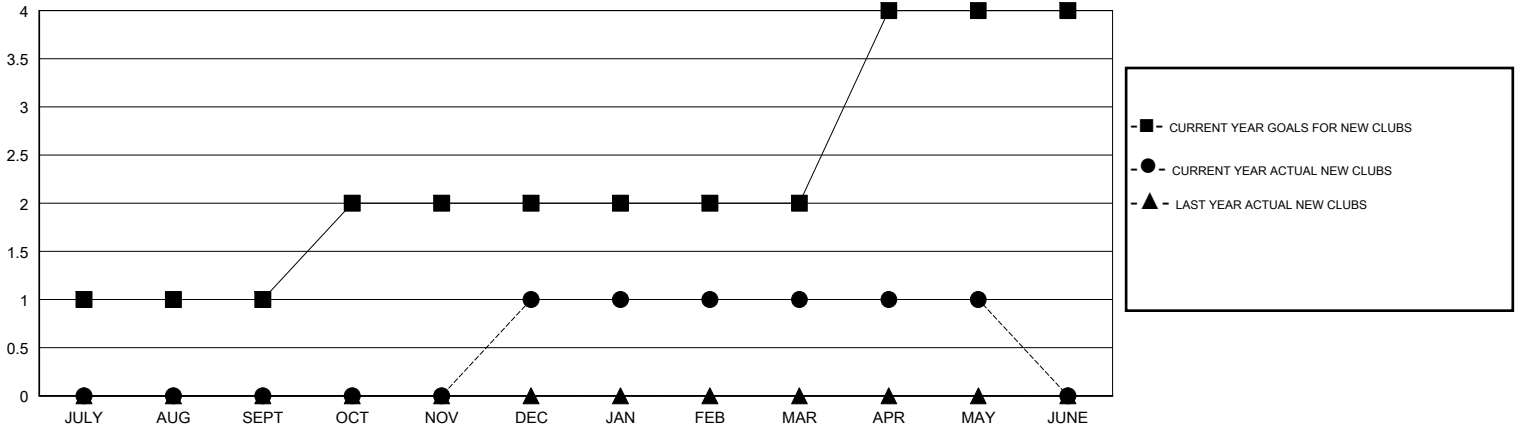
GMT: Elisabeth Haderer

LOCATION NETHERLANDS

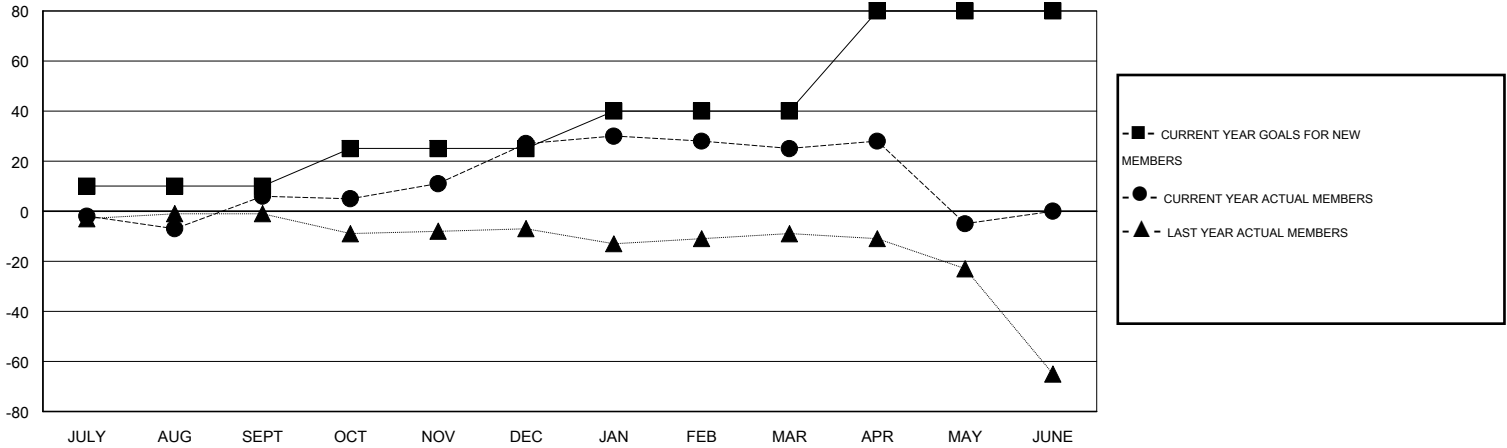
GMT CA 4

Clubs					Members				
RESULTS FOR 2014-2015					RESULTS FOR 2014-2015				
QUARTER	NEW CLUB GOAL	NEW CLUBS	DROPPED CLUBS	NET GAIN/LOSS	QUARTER	NEW MEMBER GOAL	CHARTER AND NEW MEMBERS ADDED	DROPPED MEMBERS	NET GAIN/LOSS
JULY/AUG/SEPT	1	0	0	0	JULY/AUG/SEPT	10	16	10	6
OCT/NOV/DEC	1	1	0	1	OCT/NOV/DEC	15	38	17	21
JAN/FEB/MAR	0	0	0	0	JAN/FEB/MAR	15	21	23	-2
APR/MAY/JUNE	2	0	0	0	APR/MAY/JUNE	40	20	50	-30

GOALS AND ACTUAL NEW CLUBS CUMULATIVE



GOALS AND ACTUAL MEMBERS CUMULATIVE



DROPPED CLUBS: 0	34 CLUBS OF 72 ADDED 1 OR MORE NEW MEMBERS	<u>GENDER DISTRIBUTION</u>	
<u>DROPPED MEMBERS</u>		MALE	1,481 (86.00%)
DECEASED	5	FEMALE	241 (14.00%)
CLUB CANCELLED	21	<u>FAMILY UNIT MEMBERS</u> 2	
OTHER	74	<u>HEAD OF HOUSEHOLD</u> 1	
TOTAL	100	<u>NON-HEAD OF HOUSEHOLD</u> 1	

[CLICK HERE FOR HEALTH ASSESSMENT DATA](#)